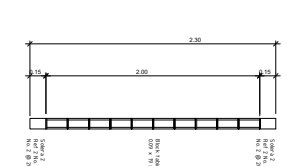
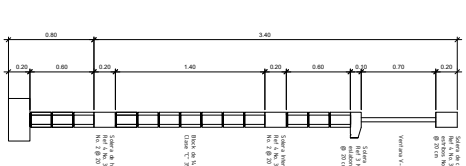
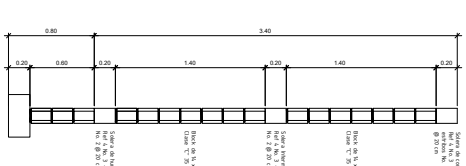
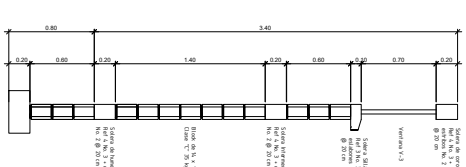
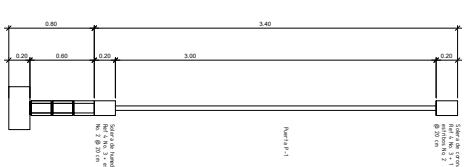
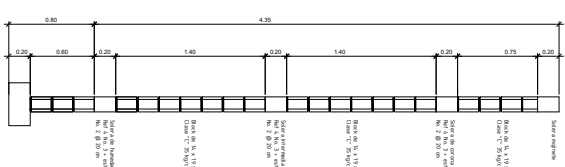
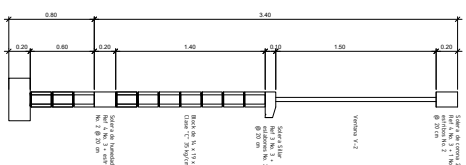
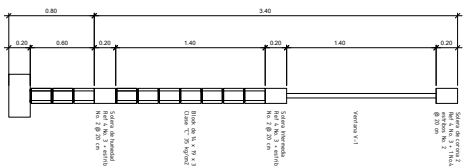
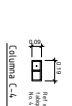
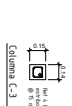
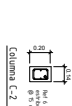
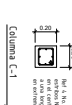
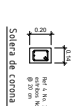
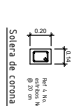
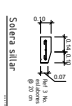
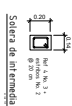
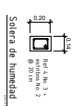
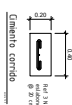
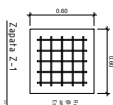


Planta de cimentación

ESCALA: 1/25



Vo. Bo. *[Signature]*



Angel Anibal Ovalle Urizar
Ingeniero Civil
Colegiado No. 12,744

3
8
HOJA

PROYECTO:
CONSTRUCCIÓN INSTITUTO BÁSICO ALDEA LAS PACAYAS

CONTENIDO: Cimentación y muros
UBICACION: Aldea Las Pacayas
Uspantán, Quiché

FECHA: abril de 2020
ESCALA: INDICADA

F.: *[Signature]*
Angel Anibal Ovalle Urizar
Ingeniero Civil
Colegiado No. 12,744